



# Swedish Colonial News

Volume I, Number 8

Fall, 1993

## GOVERNOR'S MESSAGE

Governor Johan Printz and Reverend Johan Campanius arrived in New Sweden many years ago. Our forefathers accompanied them on the journey and made New Sweden their home. To this day, many of their descendants have never visited Sweden but we can memorialize their great achievements and preserve their historic contributions for future generations by sponsoring educational programs, publications and events.

As our 350th Anniversary year of the settling of Tinicum Island comes to an end, we can reflect on the importance of that event by joining in a special church service at Christ Church (Old Swedes) on October 24, 1993 in honor of Reverend Johan Campanius.

A hearty welcome to new members of our Society and fine Council. Our Society Medal is now available for order (See page 6) and two new brochures have been printed—one on membership and the other identifies historic Swedish sites of Pennsylvania.

We have been notified recently that a generous bequest by the late Allen Lesley, past Governor, should be received shortly.

I am delighted to hear from members and encourage you to forward your ideas and comments to me.

John C. Cameron, Esq. ♦



Deed from Queen Christina issued to Lieutenant Sven Skute for land in New Sweden, dated August 20, 1653, Stockholm. This deed grants a tract of land which includes present day Kingsessing and Passyunk, as well as the land on which the American Swedish Historical Museum is now located.

PHOTO: AMERICAN SWEDISH HISTORICAL MUSEUM

## FOREFATHERS

### Captain Sven Skute

Sven Svensson Skute, a veteran of the Thirty Years War (1618-1648), was the highest-ranking official to remain in New Sweden after its surrender to the Dutch in 1655.

Prior to his coming to New Sweden with Governor Printz in 1643, Sven Skute had served as a lieutenant with the Åbo and Björneborg County cavalry. Of Swedish parentage, he came from Kronoby in Fin-

land and was married to Anna Johansdotter in Sweden.

On his first trip to New Sweden, Skute left his bride behind. She took residence at Näsby in Dingtuna parish, Västmanland, and, with his brother Jacob Svensson, is reported to have collected money from his wages while he was in America.

Lt. Sven Skute's salary was substantial by contemporary standards. He earned 40 guilders per month, four times the wage of common soldiers and company workers.

After arriving in New Sweden, Lt. Sven Skute was assigned the task of supervising construction of Fort Elfsborg in present

Salem County, NJ. He was still there in 1644 when he fired on, and boarded, Governor Winthrop's ship from New England. In 1648, his name was prominent in leading the Swedish soldiers who barred Dutch settlement near Fort Beversreede on the Schuylkill River. In the summer of 1650, Governor Printz ordered Sven Skute to return to Sweden with letters to plea for more assistance for the colony. He arrived in Stockholm in early November 1650. In March 1651 he secured an audience with Queen Christina and reported that there were only 70 men remaining in New Sweden and that more settlers and supplies were desperately needed.

Queen Christina was slow in responding to this plea. Finally, in August 1653, instructions were issued to Sven Skute to find 250 new settlers for the colony. Skute was also well rewarded for his past services. She promoted him to be a captain and on 20 August 1653, she issued him a patent for extensive lands in present South and West Philadelphia.

Skute immediately left on an extensive recruiting trip through Västerås, Värmland and Dalsland and recruited more settlers than the next ship, the *Eagle*, could carry. The ship, under the command of the new Governor, Johan Rising, left Gothenberg 2 Feb. 1654 and arrived at St. Christopher in the West Indies on 16 April 1654 when Skute went ashore to obtain fresh fruit and water. On 20 May 1654 the ship reached Fort Elfsborg, which was found ruined and deserted. On the next day, the ship reached Fort Casimir (present New Castle). Skute led three squads of musketeers ashore and they easily captured the fort, without resistance from the Dutch who were out of gunpowder.

In June 1654 Skute presented Queen Christina's land patent to Governor Rising for confirmation. Rising, however, was unwilling to allow Skute to occupy land which had been previously settled and developed by freemen for the previous decade and ultimately ruled that it was dependent on his confirmation, which he never gave.

[Many historians, beginning with John F. Watson, have erroneously assumed that the patent issued by William Penn to the three Swanson brothers at Wicaco was a confirmation of land owned by their father, Sven Skute, under Queen Christina's 1653 patent. These Swanson brothers were the

sons of Sven Gunnarsson, not Sven Skute.]

Sven Skute and his wife, Anna Johansdotter, made their home at the former Dutch Fort Casimir which had been renamed Fort Trinity after its capture. Here Skute assumed the difficult task of rebuilding the fort. He also served on Governor Rising's Council which governed the colony and heard court cases.

On 30 August 1655, Governor Peter Stuyvesant of New Netherland appeared in the Delaware with seven armed ships and 317 soldiers. The outnumbered Swedish forces recognized that fighting was useless. Their 50 soldiers were divided between two forts. Captain Sven Skute surrendered Fort Trinity on 1 Sept. 1655 and Governor Rising surrendered Fort Christina two weeks later.

After the surrender of New Sweden, Governor Stuyvesant agreed to allow the Swedes to retain their lands north of the Christina River and to establish their own government. This new "Swedish Nation," later known as the Upland Court, was established in 1656.

Remaining at Fort Casimir (New Castle) under Dutch rule became intolerable for the Skute family. They sold their lots and grain in the spring of 1656 and moved to the west bank of the Schuylkill River, on the northeast side of Kvarn Kill (Mill Creek), adjacent to Hans Månsson's Aronameck plantation, in the vicinity of present Woodlands Cemetery. There is a 1658 Dutch reference to "Sven the miller," which is probably a reference to Sven Skute's occupation in his forced retirement. He also, however, was captain of the militia for the new "Swedish nation."

Captain Sven Skute died at his Schuylkill plantation c. 1665. He was survived by four known children:

1. Johan Skute, born 4 Sept. 1654 at Fort Trinity (New Castle), moved further up the Schuylkill to lands bought from the Indians by William Warner, Sr., at Nitapkung (present Fairmount Park). He married Arnegot, daughter of Mårten Garretson and Christina Lom. A warden and trustee of Gloria Dei, he died in 1722, and had three known children, Christina, Sven and Jacob. The surname continued with Jacob under the name of Schooten.

2. Christina married William Warner, Jr., who moved to Woodbury Creek, Gloucester County, NJ, by 1681. He died there in 1714, survived by his wife and five children,

William, Sven, Isaac, Hannah and Jacob.

3. Magdalena, born 25 March 1660, married Peter Rambo, Jr., 12 Nov. 1676. They made their home on Pennypack Creek in Lower Dublin Township, where her husband died in 1729. They had 7 children: Swan, Brigitta, Peter, Andrew, Elias, Jacob and John.

4. Gertrude, born c. 1664, was married in 1683 to John Stille (1646-1722), youngest son of Olof Stille. They lived at Moyamensing (south Philadelphia) and had 12 children: Christina, Anna, William, Sarah, John, Brigitta, Barbara, Peter, Gertrude, Morton, Helene and Allemky.

*Dr. Peter Stebbins Craig* ♦

NOTE: The original grant is in the Royal Archives at Stockholm, according to *The Swedish Colonial Society's History, Charter, By-Laws, Officers, Members, Publications, Etc.* (Philadelphia, 1954). However, an original deed has been found in the Archives of the Historical Society of Pennsylvania as well.

## Preserving Family History

Not until six years ago did I know I had any Swedish ancestors. There was a statement in my great grandmother's estate that she had inherited a legacy from a Gilman B. Stilley in Knox County, Ohio. This was the beginning of my research of my Stilley line, not knowing until later, when my researcher referred me to Dr. Peter Craig, that I would find this branch of my family beautifully documented back to Sweden.

Many family histories have been lost in various ways. Knowing this, I decided to put together a loose leaf notebook for each of my children and grandchildren containing the highlights of our family history. In this way, a number of people would have some of the most important facts about the family. Since the Stille (later Stilley) Family was the best documented farther back in time, I started the book with this line.

I am very proud of my Swedish ancestors, to have Olof Stille as my forefather, and to have the New Sweden Colony as a part of my family heritage.

*Mrs. Flora Martin* ♦

Montgomery, Alabama  
A Life & Forefather Member

## HISTORIC SITES

### Bottnaryd, Sweden

"A Cultural Guide to Bottnaryd, the Homeland of Governor Johan Printz" by Bo E. Karlson, Curator of Jönköping Län Museum (originally published by Jönköping Län Hembygdsförbund, summer, 1988). Translated and edited by Benkt Wennberg.

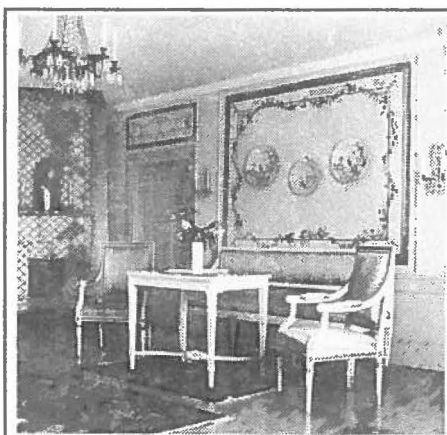
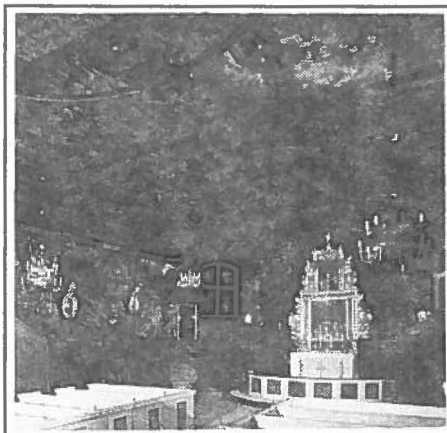
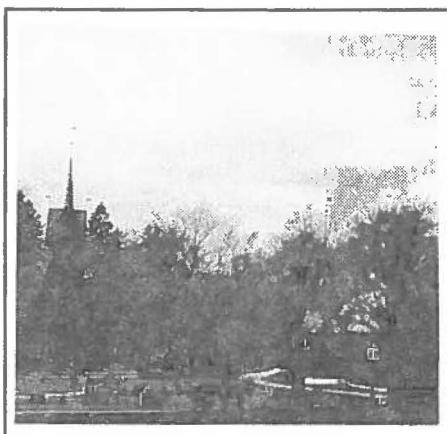
BOTTNARYD is a forested parish in the Diocese of Skara and located between the Swedish provinces of Småland and Västergötland. A border district that of late has been endowed with a densely populated area of industrial character. Among its many memorials from Sweden's past as a great power are foremost Bottnaryd Church and several manors, of which Johan Printz's Gunillaberg is the best known.

The present BOTTNARYD CHURCH, a red-painted, wooden building, dates from the late 1660's, when it replaced a wooden church from the Middle Ages. Proof exists for a church in this place at least from 1335. The church is built from horizontal logs in the shape of a longhouse with short transepts. Today, the roof as well as the walls are covered with wood shingles, and the church's main entrance is on the south side. The mortuary chapel of the Ribbing family was added in the 1670's and now serves as a museum, where one can find two oil paintings, one of Jönköping Län Governor Printz and his first wife, Maria von Linneštad, probably painted by Daniel von Rohlen, c. 1660.

The interior of the church is dominated by the decorative wall paintings made in 1693-95 by Anders Falack following the artist Mattias Merian's illustrations in a Bible from 1630. It also contains a number of valuable movables, such as the baptismal font of sandstone from the 1300's and its brass basin from the 16th century.

Under the church are masonry or timbered graves. Of special interest among the effects in the church is the funeral coat of arms of Johan Printz, which is suspended above the southern entrance. Printz is supposedly buried in a grave in the south transept.

GUNILLABERG MANOR HOUSE is located about one kilometer (0.62 miles) from Route 40, opposite the exit for



PHOTOS BY BO E. KARLSON  
AND STIG LJUNG

Bottnaryd. The estate is known from the 1500's and belonged to the Crown, under the name of Gunelabo, when it was granted in 1642 to Johan Björnsson who was knighted Printz the same year. The following year Johan Printz was appointed Governor of the North American colony of New Sweden. The name of the manor was now changed to Gunillaberg, and it became the main estate of a complex of farms. Printz also restored the manor to fit his new station in life.

After his death in 1663, when he served as Governor of Jönköping Län, Gunillaberg was inherited by his daughter Christina, married to Peer Örneklo, Governor of Skaraborg Län. Until 1698 it was in the Örneklo family, but since that time many owners have rebuilt and restored the mansion.

Today, Gunillaberg is owned by Bo Ehrner, former CEO of Swedish Match and considered to be one of the province's best preserved manors of the Carolingian period.

Bo E. Karlson ♦

#### *Excerpt from Gunillaberg: A Brief History by Bo Ehrner*

"On February 12, 1660, King Carl X Gustav died in Gothenburg. Governor Printz was responsible for taking care of the funeral procession while it passed through Jönköping Län on its way to Stockholm. The procession reached Bottnaryd, near Jönköping, on April 9. The king's coffin was placed in Bottnaryd Church and members of the court, together with the guard of honor, repaired to Governor Printz's residence, where they ate dinner.

"The annals of Gunillaberg record the contents of that meal: 5 oxen, 4 calves, 15 sheep, 19 lambs, 2 young swine, 2 pigs, 136 kg. dried meat, 25.5 kg. ham, 54 geese, 1 dried goose, 8.5 kg. salted pike, 2.1 kg. fresh fish, 100 liter rye-flour, 25 liter peas, 25 liter turnips, 25 liter cabbages, 42.5 kg. soft rye-bread, 187 kg. coarse bread, 400 eggs, 42.5 kg. butter, 1.3 kg. table butter, 10.4 liter sweet milk, 12 kg. coarse-grained salt, 5.5 kg. fine salt, 20.8 liter wine, 83.2 liter beer and 13 liter beer-vinegar. Preparations and illumination required 8.5 kg. tallow candles, 4 barrels of coal, and 4 cords of firewood."

## EDUCATION

# Kids Celebrate

Over five hundred children and adults from Delaware, New Jersey and Pennsylvania gathered at Governor Printz Park in Essington, PA on June 11th to mark the 350th Anniversary of the arrival of Johan Printz, the first Governor of the area now called Pennsylvania.

The day's activities commemorated the Governor's landing at Tinicum Island in 1643 and from this site Printz served as Royal Swedish Governor of the New Sweden Colony for 10 years.

Kids Celebrate was sponsored by the Swedish Colonial Society (SCS) with additional funding from individual SCS members, the American Scandinavian Foundation, the Swedish Women's Education Association (SWEA), IKEA and the Swedish Information Service of the Consulate General of Sweden.

A parade of kids led by the Interboro High School Band marched through the town of Essington to Governor Printz Park. Among the participants were 25 children,

along with 10 Swedish students and teachers who flew in from Sweden made up the large group of Electronic Exchange Students.

The American and Swedish students have been participating in a three-year Electronic Exchange program via computer. The Swedish students hail from Jönköping, the county where Governor Printz was born and to which he returned after his term in America. After three years of correspondence the Swedish guests spent their first week in America visiting with students and faculty from their sister schools.

An hour long ceremony began on the banks of the Delaware River with the arrival of Johan Printz, played by Thomas Reiff, in the *Little Key*— a sailing vessel from the Kalmar Nyckel Shipyards. Paul

Hogate, a direct descendant, led the audience in the American and Swedish national anthems. They were accompanied by the Tinicum School Band. Senator Bell and Legislator Raymond presented proclamations to the SCS Governor, John Cameron. The Honorable W. Thatcher Longstreth, whose

family originally donated Printz Park to SCS, spoke of the historic past.

A telegram of congratulations was read from the King and Queen of Sweden. Gunhild Ljung, Mistress of Ceremonies, led the children in a round of cheers for both Old and New Sweden. Carol Rasmussen, a well-known musician on the key fiddle, played traditional Swedish music and the Tinicum School Chorus sang Swedish folk songs. The direct descendant children then joined Johan Printz in the story of *The 12 Voyages to America* narrated by Matthew Smith. Printz brought greetings from Queen Christina and delivered an impassioned speech to the colonists to join forces together with God to build a new nation in this remote and foreign land.

Swedish dances by Jerome and Lena Schiffer were followed by Native American children, Crying Sparrow and Waya Dimalanta, in dances from their culture. The day of celebration ended with rings of school children joining the native Americans in a dance of friendship.

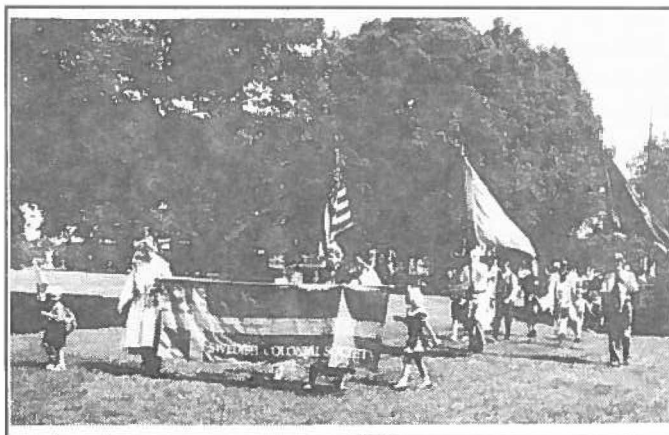


Direct Descendants join the Electronic Exchange students in the ceremony  
PHOTO BY JULIE JENSEN



their parents and grandparents, all direct-descendants of the first New Sweden settlers. Over 200 other descendant kids could not attend but sent their names from all over the country to be listed in the program. They live in California, Vermont, Texas, Indiana, Georgia, Pennsylvania, New Jersey, Utah, New Mexico, Iowa, Illinois, Florida, Ohio, Connecticut, South Carolina, Virginia, and Delaware.

Four hundred elementary school students from Tinicum Township School in Pennsylvania, and East Greenwich and Upper Pittsgrove Schools in New Jersey



Far Left: Members of the Swedish Women's Education Association (SWEA) join other parade participants in the celebration  
Left: SCS Banner and Color Guard lead the parade into Governor Printz Park  
PHOTOS BY JULIE JENSEN



Both the Electronic Exchange program and the Kids Celebration were developed by the Education Committee of SCS and coordinated by Beth Linnerson-Daly. John Widtfeldt and Brian Daly, two other council members, were also instrumental in organizing the celebration.

Articles about the celebration were written in local papers, as well as The Nordstjernan Swedish News, The Sweden & America Magazine, The Swedish Women's Education Association Newsletter and in Sweden The Jönköping Posten and Högskriften Magazine for the faculty and students of the Jönköping University.

Over 50 organizations, companies or individuals contributed monies or assis-

tance to the Kids Celebration and were listed in the program. Several others made important contributions which should be noted as well. Anne Bates provided bales of straw and transportation to get them to the site. IKEA provided the services of Carol Rasmussen, the key fiddle player and two SCS members, J. H. T. Rambo and William Sederlund, sent generous donations not listed in the program.

This was our largest public event for many years, and we wish to express our great appreciation to all who participated in making it a success.

Beth Linnerson-Daly ❖



Top: Printz sits next to the banner bearing his Coat of Arms created by Jean Roll, direct descendant of Peter Gunnarsson Rambo.  
Above: Three of the program organizers: (Left to Right) SCS Governor John Cameron, Mistress of Ceremonies, Gunhild Ljung, and Project Director, Beth Linnerson-Daly.  
Below: Councillor John Ramee, head of the Color Guard, with the Widtfeldt grandch idren after the ceremony  
PHOTOS BY JULIE JENSEN



Above: Performer, Thomas Reiff as Governor Printz stands next to the well-known Printz statue sculpted by SCS member Carl Lindborg.  
Below: Swedish Guests- students and teachers- from Swedish Electronic Exchange schools; Lars Green, (right) a teacher from Barnarpsskolan presents gifts to SCS Governor John Cameron (center)  
PHOTO ELAINE MYERS  
PHOTO BY JULIE JENSEN



A VHS video tape was made of the celebration events and copies are available for \$14.50 (includes tax and shipping charges) from Studio B, RR #1, Box 1256, Woodstown, NJ 08098. Phone (609) 769-4680.

## REVIEWS

### Family Newsletters

Three family newsletters have come to my attention over the years which are devoted primarily or exclusively to descendants of early New Sweden families.

The oldest is *The FRIENDship News*, published three times per year, now in its 16th year, which is open to anyone interested in the surname of Friend. As most persons by this surname are descendants of the Swede, Nils Larsson Friend, his descendants predominate. Many of the "old guard," however, still cling to the 19th century fiction that the Swede was actually an Englishman from Weymouth, England, whose real name was Captain Nicholas Friend (a person who never existed). The newsletter is published for members of the Friend Family Association of America. Membership dues are \$15 per year; applications may be sent to Mrs. Shelve Foore, 7550 Mapletree Drive, Houston, TX 77088. The Association maintains an excellent Friend Family Genealogical Library in Friendsville, Maryland, a town in Garrett County, MD, founded by one of Nils Larsson Friend's descendants.

Another such publication is the *Tussey Family Newsletter*, published quarterly by Mary Lou House, 5511 E. Shore Drive, Greensboro, NC 27406 (\$10 per year). In this case, it is believed that all Tusseys are descendants of Olof Thorsson who arrived in New Sweden in 1641 with his wife and family. His patronymic evolved into the surname Tossawa, Tossa and finally Tussey in later generations.

The newest entrant of which I am aware is the *Sinex Family Newsletter*, now in its first year, published quarterly (for \$5 per year) by Antoinette W. Sorenson, 3631 North Mullen St., Tacoma, WA 98407. This newsletter is targeted to the Sinex and Sinnickson descendants of Sinnick Broer, who joined the New Sweden colonists in the period of Dutch rule, 1655-1664.

Are there other such family newsletters out there devoted to descendants of the early Swedes?

Dr. Peter S. Craig ❖



*Memorial Ceremony at the site of the 1923 marker erected by the SCS on the grounds of the Corinthian Yacht Club, Essington, PA. Left to right, President of the Delaware Swedish Colonial Society, Connie Metcalf, Honorable Henrik Liljgren, Swedish Ambassador, and SCS Governor John Cameron.*  
PHOTO BY BETH LINNERSON-DALY

## 350 YEARS LATER

### Swedish Council Meets in Philadelphia

In commemoration of the fact that the Swedes became the first permanent European settlers in present Pennsylvania 350 years ago, the Swedish Council of America held its annual conference in Philadelphia May 20-23.

Hosting the event were the Swedish Colonial Society, the Delaware Swedish Colonial Society, the American Swedish Historical Museum of Philadelphia and the New Sweden Farmstead Museum of Bridgeton, NJ.

The Swedish Council of America, with headquarters in Minneapolis, is the national umbrella organization for all Swedish-American groups in the United States. It also publishes a quarterly magazine, "Sweden in America."

The SCA's Convention, attended by its officers and directors and their wives, featured dinners on Friday night at the American Swedish Historical Museum and on Saturday night at the Corinthian Yacht Club. Many members of the Swedish Colonial Society attended one or both of these events.

Also featured was a bus tour on Saturday afternoon, May 22, led by SCS historian Peter S. Craig, which included stops at

Holy Trinity (Old Swedes) Church, the Morton Homestead and Printz Park.

The honored guests of the convention were the new Swedish Ambassador to the United States and his wife, Mr. and Mrs. Henrik Liljgren. Prior to the Saturday night dinner, they laid a wreath at the granite monolith (near the entrance of the Corinthian Yacht Club) which had been erected by the Swedish Colonial Society in 1923, the first memorial on Tinicum Island to celebrate the first settlement in Pennsylvania.

On Sunday, May 23, several Council directors and their wives attended worship services at Gloria Dei (Old Swedes) Church. Others traveled to the New Sweden Farmstead Museum in Bridgeton for a 17th century dinner and a muster of "soldiers" in their colonial regalia.

### Society Medal

Our beautiful Society Medal is again available for purchase from Caldwell's, 1339 Chestnut Street, Philadelphia, PA 19107. The price is \$90 for a regular size medal and a miniature is \$40. If you are interested please contact Wally Richter, Registrar, at 336 South Devon Ave., Wayne, PA 19087 [Telephone (215) 688-1766] for a signed verification form. No orders will be taken by Caldwell's over the telephone.

## UPCOMING EVENTS:

### Reverend Campanius Service

Swedish Folk Festival Christ Church  
(Old Swedes) Swedesburg, PA  
October 24, 1993 Evensong Service,  
Smörgåsbord and Festival, 2:00 P.M.

### Lutheran Theological Seminary

7301 Germantown Ave. Philadelphia  
Nov. 13-14, 1993 Conference, "Henry  
Muhlenberg's Experience in the New  
World" including  
"The Relationship Between Swedish and  
German Churchmen in the Muhlenberg  
Era," presented by Dr. Peter S. Craig.  
Nov. 14, 11:00-12:30 PM

### Genealogical Society of Penna.

Nov. 16, 1993, 1:00 PM  
1300 Locust Street, Philadelphia  
Dr. Peter S. Craig, lecturer:  
"17th Century Swedes on the Dela-  
ware" with book-signing of 1693 *Census  
of the Swedes on the Delaware*.

### Julmiddag Celebration

Corinthian Yacht Club  
Essington, PA  
December 5, 1993  
Luncheon with guest speaker

### St. Lucia Celebrations

American Swedish Historical Museum  
Philadelphia, PA  
December 3, 7:30 P.M. Smörgåsbord  
December 4, 12:30 P.M. & 7:00 P.M.

### Gloria Dei Church

Philadelphia, PA  
December 10, 6:00 & 8:00 P.M.  
December 11-12, 2:00, 3:30 & 5:00 P.M.

### Saint James Church of Kingsessing

Philadelphia, PA  
December 12, 1993

### Nothnagle Cabin

Gibbstown, NJ  
"Salute to Colonial America"  
December 12, 2:30 P.M.

### Trinity Episcopal (Old Swedes')

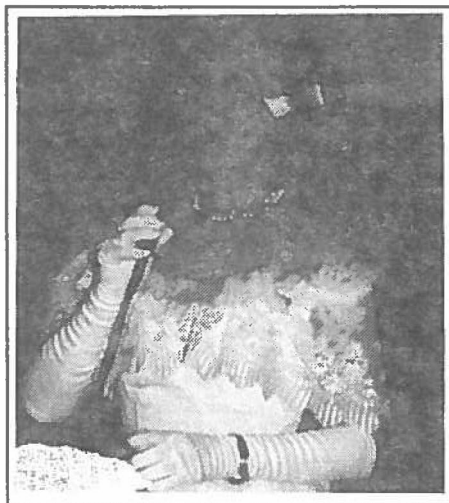
Swedesboro, NJ  
December 12, 5:00 P.M.

### Forefather's Luncheon

Dupont Country Club  
Wilmington, DE  
April 10, 1994  
Luncheon with guest speaker

### Anniversary Service

Gloria Dei Church  
Philadelphia, PA  
1st Sunday in May



### Jenny Lind Concert

On June 27, 1993, our Society  
sponsored a performance starring Evelyn  
Swensson at the Delaware County  
Summer Festival. The program  
was entitled "An Evening with Jenny  
Lind." Following the event our Society  
hosted a wine and cheese party. We  
thank Marion Nelson and Gene  
Martensson for their assistance in  
arranging this special evening.

### New Sweden Legacy

On Sunday, October 24, 1993, an  
historic event will take place at Christ  
Church (Old Swedes) in Swedesburg,  
PA. To commemorate the 350th Anniver-  
sary of the arrival of Reverend Johan  
Campanius Holm to the New Sweden  
Colony, an Evensong Service and a  
Swedish Folk Festival will be held at  
Christ Church between 2:00 PM-  
4:00PM.

Participants in the church service to  
begin at 2:00 will include the Reverend

James E. Evans, Christ Church, the  
Reverend David B. Rivers, Gloria Dei  
Church in Philadelphia and the Reverend  
C. Reed Brinkman, St. James Church of  
Kingsessing in Philadelphia. The Very  
Rev. John Midwood, Archdeacon,  
Episcopal Diocese of Philadelphia will  
also attend. After the church service,  
authentic Swedish refreshments will be  
served in the Parish House.

At 3:00 a Swedish Folk Festival will  
feature local area performers. Exhibits  
and displays will be presented by local  
Scandinavian merchants, museums and  
clubs. Members of the SCS will be  
available to relate the history of the early  
Swedes in America, and lead a lantern  
procession into the graveyard for Alla  
Helgons Dag.

According to John C. Cameron,  
Governor of the Swedish Colonial  
Society, Reverend Johan Campanius  
Holm arrived in New Sweden on  
February 15, 1643. He accompanied  
Johan Björnson Printz who was the  
Governor of the New Sweden Colony  
from 1643-1653. Reverend Campanius  
was Lutheran pastor to the Swedes on the  
Delaware River and caused to be built a  
Lutheran Church which Campanius, as  
pastor, dedicated September 4, 1646. He  
served in the New World for six years.

He took an interest in the Native  
American population and their language,  
and translated Luther's catechism into the  
language of the Lenni-Lenape. This  
catechism was printed in an edition of six  
hundred copies. Two vocabularies were  
appended—Indian and Swedish.

Over the years, other settlements of  
Swedish descendants began to flourish.  
The Swedish Lutherans founded the  
Gloria Dei "Old Swedes" Church, South  
Philadelphia, in 1700. Several churches  
were established along the Schuylkill  
River including Saint Gabriels Church,  
Douglassville, Berks County in 1720,  
Christ Church "Old Swedes",  
Swedesburg, Upper Merion Township in  
1760, and Saint James Church of  
Kingsessing, West Philadelphia in 1762.  
Originally, Swedish Lutheran, these  
churches became part of the Episcopal  
Diocese of Pennsylvania and remain so  
today.

John Cameron ❖

## MEMBERS

### Congratulations to Carl & Alice Lindborg

The Swedish Colonial Society extends heartfelt CONGRATULATIONS to Carl and Alice Lindborg who on August 28 received the Charlotta medals for their "dedicated and long-standing relations between Sweden and the inhabitants of Swedish background in the U.S."

Airline Captain Carl-Werner Pettersson, President of the Växjö Institute's Friendship Society presented the medals at a ceremony at the Hutchinson House in Devon, PA. In attendance were members of the Lindborg family and over fifty friends and well-wishers, including a group of Swedish tourists led by Captain Pettersson who were here on a "pilgrimage" to Swedish historical sites in the U. S.

Benkt Wennberg ❖

### In Memorium—1993

W. Glenn Tussey, a Forefather Member (descended from Olof Thorsson) died in Earlysville, VA, 26 August, 1993, at the age of 70. An ardent genealogist, he published a book last year entitled *Gersham Tussey and His Kin*, which ties together Tussey Family members from coast to coast and traced the family back to the arrival of Olof Thorsson in New Sweden in 1641.

### New Members

Mr. & Mrs. Edwin D. Apell -  
Cherry Hill, NJ

Lisa S. Couch & Family -  
Watertown, NY

Mr. & Mrs. Walter C. Culin -  
Burlington, NC

Bonita Grant-Alexander Library, Rutgers U.  
New Brunswick, NJ

Mr. & Mrs. Bruce Hanes -  
Elkins Park, PA

Bonnie Hillman - Radnor, PA (Life)  
Kendra J. Hillman - Radnor, PA (Life)

Mr. Christopher F. Huntington  
Wilmington, DE

Dr. & Mrs. Park Huntington, Jr. -  
Wilmington, DE

Susan Ann B. Katzberg -  
Carmichael, CA

Mae E. V. Marsden-Mullica Hill, NJ

Ruth R. Matthews - Strasburg, PA

David T. McDugall - Orelan, PA

Mrs. Rowys Pearce - Folcroft, PA

Herbert R. Rambo & Family -  
Berlin, NJ

Christopher Roak- Erdenheim, PA

Barbara Rocco-Ardmore, PA

Janis Lee B.White - Moraga, CA

*The by-laws of the Swedish Colonial Society provide that "active members who can prove descent from Swedish colonists in the United States prior to the Treaty of Paris, marking the close of the Revolutionary War in 1783, may be designated with an asterisk on the records of the Society and be further known as Forefather Members." Society members who may qualify for this distinction, but are not yet so recognized, may obtain application forms and assistance from the Society's Historian, Dr. Peter S. Craig, F. A. S. G., 3406 Macomb St., N. W., Washington, D. C. 20016*

Walter C. Culin of Burlington, North Carolina, becomes the latest addition to the Society's Forefather Members.

Mr. Culin is a direct lineal descendant of Johan Van Culin (probably of Dutch birth), who married Anna Johansdotter, daughter of Johan Grelsson, who sailed to New Sweden with his family on the *Mercurius* in 1655.

In filing his application, Mr. Culin also kindly supplied the Society with copies of pages from the 1868 William E. Culin Bible, which presented vital facts on births, marriages and deaths of his Culin line from Swan Culin of Ridley Township, who married Margaret Hendrickson prior to the Revolutionary War.

Mr. Culin is descended from most of the families originally settling in Ammansland (Ridley Township). Aside from Johan Van Culin and Johan Grelsson, these include Mårten Mårtensson, Bartil Eskilsson and Hendrick Johnsson.

### SWEDISH COLONIAL NEWS

#### Publications Committee

Beth Linnerson-Daly, Editor  
John Cameron  
Peter S. Craig, J.D.  
Brian Daly  
Alice Lindborg  
Carl Lindborg  
Cmdr. John Ramee, USN Ret.  
David Rivers  
Benkt Wennberg, Ph.D.  
Budget Printing  
Skillman, NJ  
Jean Roll, Proofreader

### Swedish Colonial News

The Swedish Colonial Society  
1300 Locust Street  
Philadelphia, PA 19107

Postage